



PT. OCTO CORINDO SARANA

COMPANY PROFILE

YOUR RELIABLE
EXTENSION
IN FOUNDRY
SOLUTIONS



PAGE OF CONTENT





PAGE OF CONTENT

02

Who We Are

04

Milestones

06

Forewords

08

Points of Excellence

10

Our Values

12

What We Do

14

Our Principals

16

About MTI Performance Material

20

About Calderys

26

About Larpen Metallurgical Service

28

About Simpson

32

About PT. Sinto Indonesia

36

About ASK Chemicals

40

Who We Work With

43

Contact Info

WHO WE ARE



OCTO CORINDO SARANA was established in 1982 and has been serving the foundry material and foundry machinery industry

ever since the beginning. For more than thirty years of serving customers, we have grown to become the leading foundry materials and foundry machinery product and service provider in Indonesia by working closely with customers and make the best practice of what they need, effectively and efficiently.

We create value for our customers by emphasizing communication and participation together with our principals in finding and delivering the best quality goods to drive the most efficient production method.

We are the matchmaker, the link between what customers need and what principals offer. We are the reliable extension in foundry solutions to help you run the best business.

Established

October 4th, 1982

Status of Investment

Domestic Investment/private

Land Space

23000 sq.M

Building

16000 sq.M

Number of Employees

65 persons

OCTO CORINDO SARANA has been completing years after years of milestone in a vision to become a trusted supplier of high-quality products and reliable service for foundry industry in Indonesia. Our mission is to be the best partner in delivering the best quality products for customer through effective and efficient process on an ongoing basis, as well as maintaining a good partnership with producers of premium products.

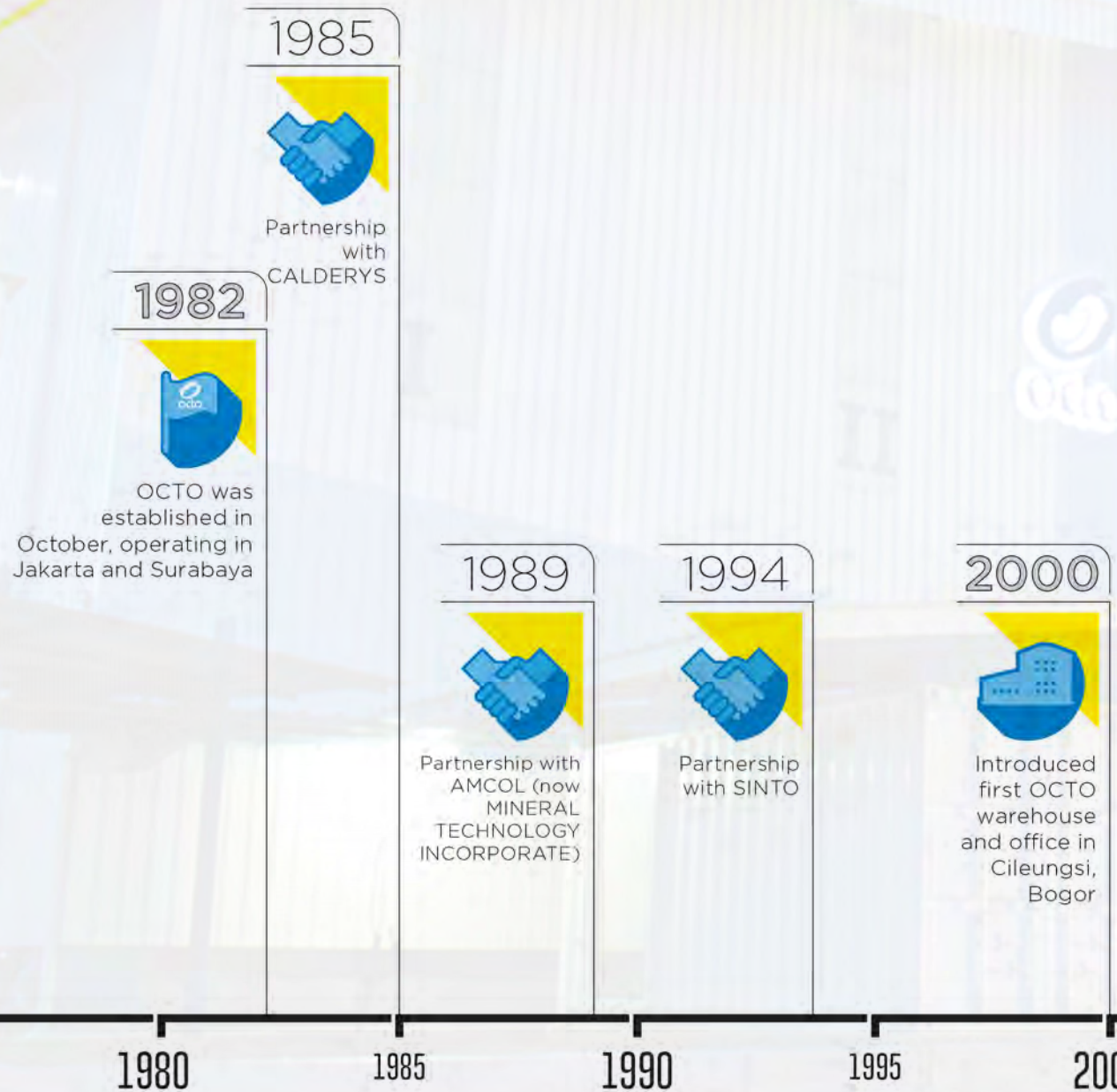
Based on our vision and mission, we want to bring the best value from our principals to you by continuous improvement of our service and materials. We cater all your needs in metal forming process with product ranging from machinery, such as sand preparation system, molding system, and surface treatment machinery, as well as wide range of materials such as refractories, sand system additives, molten metal additives, and surface treatment abrasives. We will make sure your core operations are empowered by our expertise in providing our know-how to help your products to perfection.

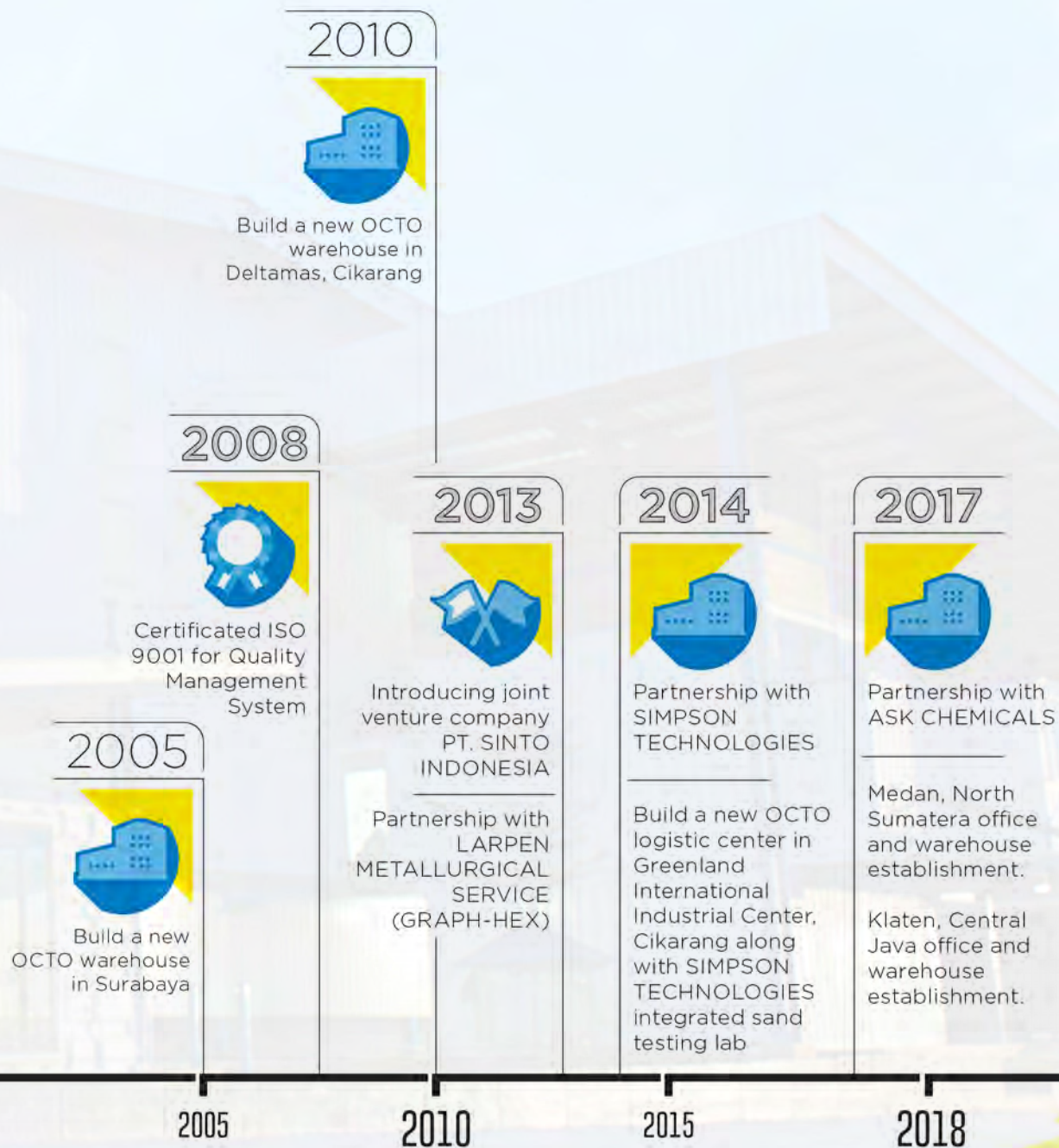
Based on this strategy, our research and business development programs are aim not only to focus on the materials, but also to exceed your expectations by offering outstanding customer service, logistic, and flexibility. We are here to support, connect, and ensure customers to get not only the performance of the products, but also the satisfaction.



WHO WE ARE

OUR MILESTONE







FOREWORDS

Dear Foundry Partners,

A team of experts established our company with respective experience in providing comprehensive solutions for foundry and foundry machinery industry. Our goal in establishing the company is to build a consistent ecosystem for our employees, clients and partners to have visible achievement and have their effort awarded.

Today, after years of hard work and following our vision and mission, we are proud to see how we benefit our clients by providing them with the right solutions.

We partner with system integrators in delivering the right solutions to our clients. Such partnership strategy brings mutual benefits to both sides.

Best Regards,
President Director



F. Kuswanto

FOUNDER PT. OCTO CORINDO SARANA

POINTS OF EXCELLENCE



PREMIUM GOODS, PREMIUM QUALITY

We know, we get, and we deliver only the best products with the best quality, that's why we work together only with the best principals of supporting material and machine in foundry industry.

PRODUK PREMIUM, KUALITAS PREMIUM

Kami memahami, mendapatkan, dan memberikan produk terbaik dengan kualitas terbaik untuk Anda. Oleh karena itu, kami hanya bekerjasama dengan principal materi aditif dan mesin terbaik di industri pengecoran logam.



PROVEN CREDIBILITY

We are certified ISO 9001:2008 for quality management systems. You can always count on our logistic facilities for your needs on delivery reliability.

JAMINAN MUTU

Kami memiliki sertifikasi ISO 9001:2008 untuk sistem manajemen mutu. Anda juga dapat mengandalkan fasilitas logistik kami untuk kebutuhan pengiriman setiap saat.



GOOD RELATIONSHIPS WITH PRINCIPAL

The only way to create a good relationship with you, our customers, is by maintaining a good relationship with our principals. We want to build a consistent ecosystem for our employees, client, and partners.

HUBUNGAN BAIK DENGAN PRINCIPAL

Satu-satunya cara untuk menjalin hubungan yang baik dengan klien adalah dengan menjaga hubungan yang baik dengan principal. Kami ingin membangun ekosistem yang konsisten bagi karyawan, klien, dan principal kami.



EXCLUSIVE WITH AFTER-SALES ACTIVITIES/SERVICES

We are dedicated in delivering the best service for customers, anywhere, anytime. Our sales and after-sales services are fully committed to optimizing your productive time and minimizing your downtime.

EKSKLUSIF DENGAN LAYANAN PURNA JUAL

Kami ingin memberikan pelayanan terbaik bagi klien, di mana saja dan kapan saja. Layanan penjualan dan purna jual kami berkomitmen untuk mengoptimalkan waktu serta mengurangi risiko Anda.



OPEN FOR DISCUSSION AND CONSULTATION

Our eyes, hearts, and minds are all
yours for any kinds of consultation
concerning your needs.

DISKUSI DAN KONSULTASI

*Kami membuka mata, hati, dan pikiran
dalam bentuk konsultasi apa saja
mengenai kebutuhan Anda.*



OUR VALUES

In Octo, we have certain set of values that keep us moving, delivering our service and stay in business.

These values make us who we are and ensure we run sustainable qualities and relationship with you, our customers.

Di Octo, kami memiliki nilai-nilai yang menjadi motivasi kami untuk terus berkembang dan memberikan layanan terbaik dalam menjalankan bisnis. Nilai-nilai inilah yang membangun karakter kami untuk terus menjaga kualitas secara berkelanjutan dan menjalin hubungan baik dengan Anda.

PRINCIPALS



CLIENT



LOYALTY

We are constantly on your side to make sure you get the maximum result using the best method of production.

LOYALITAS

Kami selalu membimbing Anda untuk memastikan Anda mendapatkan metode produksi terbaik untuk hasil maksimal.



INTELLIGENCE

We care about your business, so we will fit our expertise in knowledge and skill to find the most efficient and effective use of production.

KEAHLIAN

Kami peduli dengan bisnis Anda, karena itu kami mengerahkan keahlian, pengetahuan, dan keterampilan dalam menentukan metode produksi paling efisien dan efektif.



A GIVER, NOT A TAKER

It is not about how much, but also how well we can perform to reach your goal for your business, not ours.

MEMBERI LAYANAN TERBAIK

Kerjasama kami dengan Anda bukan mengenai seberapa banyak, tetapi mengenai seberapa baik kami dapat bekerja untuk mencapai tujuan Anda dan bisnis Anda.



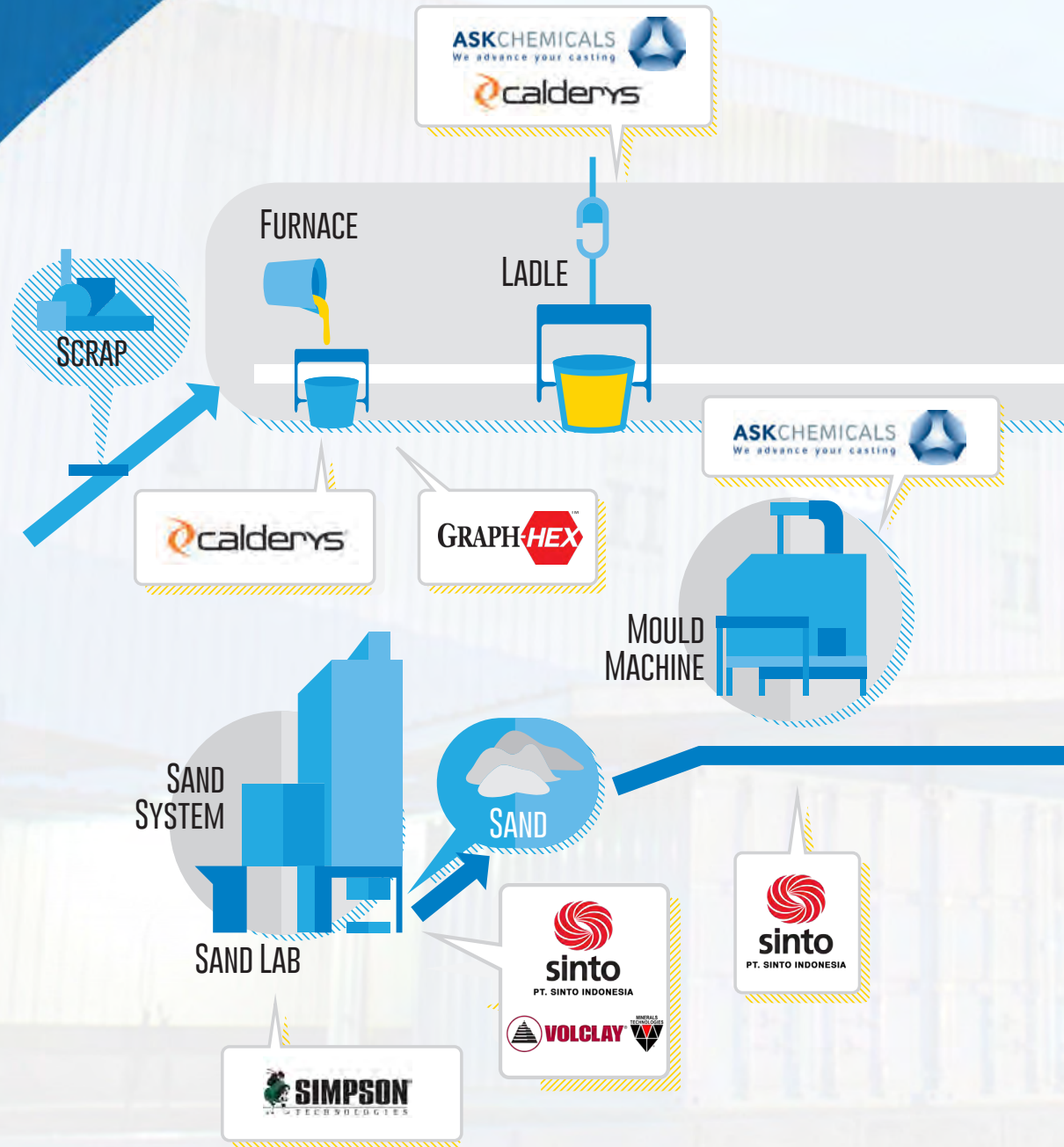
SUPPORTIVE

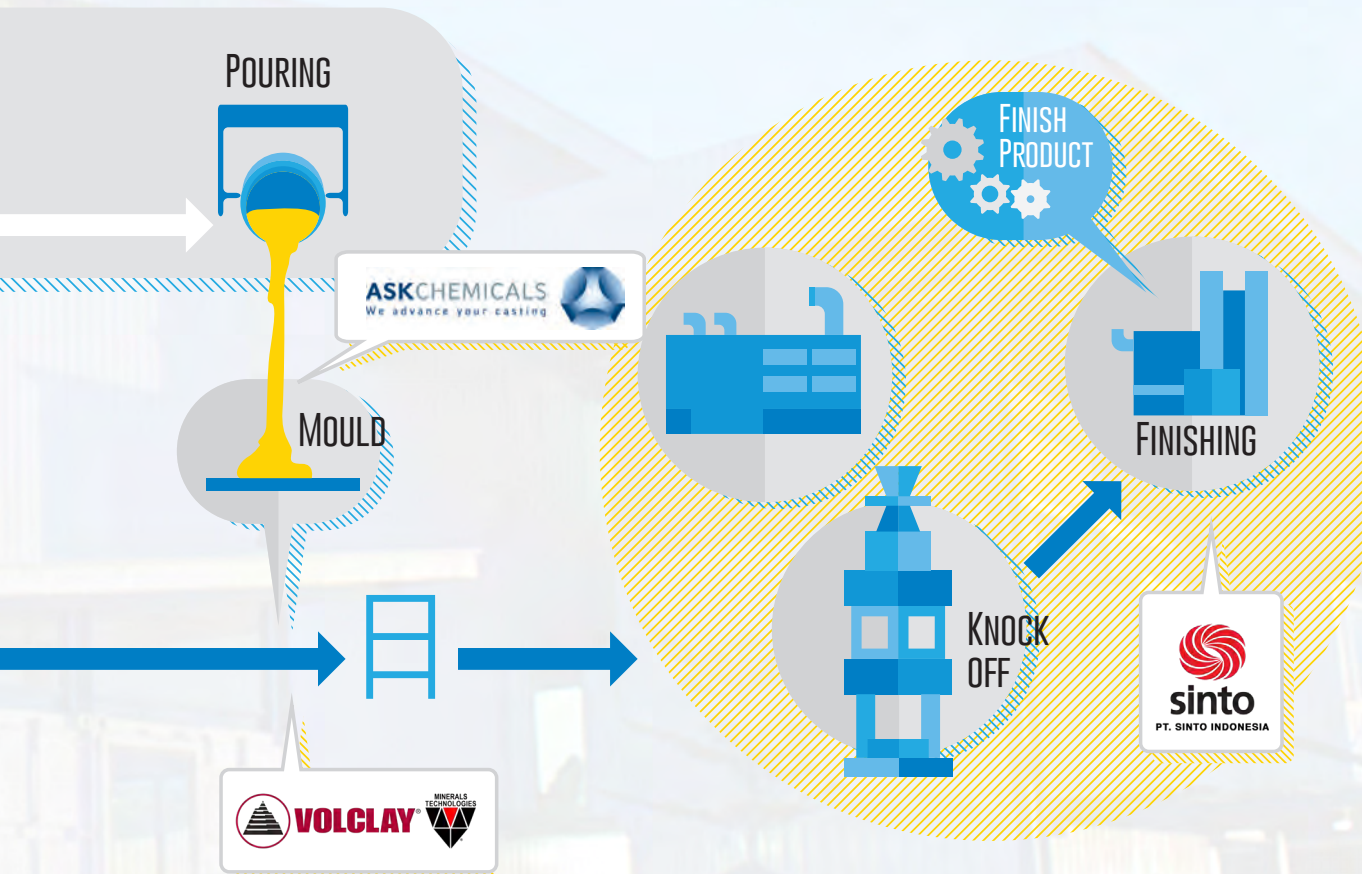
We always support and encourage you and your business through consultancy.

SUPORTIF

Kami selalu mendukung dan memotivasi Anda dan bisnis Anda melalui konsultasi.

WHAT WE DO





OUR PRINCIPALS



MINERAL TECHNOLOGY INCORPORATE (MTI) **AMCOL** INTERNATIONAL is now MINERAL TECHNOLOGIES.

MTI Performance Material segment is one of the world's leading suppliers of bentonite and bentonite-related products. Bentonite's unique chemical structure gives it a diverse range of capabilities, enabling it to act as a thickener, sealant, binder, lubricant or absorption agent. MTI Performance Material segment owns and operates more than 25 mining/production facilities strategically located worldwide.

AMCOL INTERNATIONAL kini menjadi **MINERAL TECHNOLOGIES** dengan segmen MTI Performance Material yang dikenal dunia sebagai salah satu pemasok produk Bentonit dan semua yang berkaitan dengan Bentonit. Keunikan struktur kimia Bentonit menghasilkan beragam kemampuan yang memungkinkan Bentonit untuk bekerja sebagai pengental, pelindung, pengikat, pelumas ataupun penyerap. Segmen MTI Performance Material mengoperasikan lebih dari 25 fasilitas pertambangan/produksi strategis yang tersebar di seluruh dunia.



A world leader in monolithic refractories, **CALDERYS** delivers top-flight refractory products manufactured in its 18 production facilities spanning across 15 countries, along with the materials, the company provides design, installation, maintenance, and repair service support as well. The comprehensive and strong performing product portfolio of Calderys is the result of innovative concepts, technological expertise, and over 100 years experience in the refractory business. Calderys is a reliable innovative refractory solution supplier that delivers consistent quality and brings you performance you can trust.

Menguasai pasar monolithic refractories, **CALDERYS** menghasilkan produk refraktori terkemuka yang diproduksi di 18 fasilitas produksi di 15 negara, yang termasuk diantaranya material, desain, instalasi, pemeliharaan, serta layanan perbaikan. Peran kinerja produk Calderys yang komprehensif dan kuat adalah hasil dari pemikiran yang inovatif, keahlian teknologi, dan pengalaman selama 100 tahun dalam bisnis refraktori. Calderys merupakan pemasok solusi refraktori yang konsisten memberikan kualitas dan kinerja yang dapat Anda andalkan.



Under **LARPEN METALLURGICAL SERVICE**, Graph-Hex was developed through expertise in the early 2000's as an economical source of high quality carbon rizer for the foundry industry. Utilizing their world wide sourcing of the highest quality raw materials combined with state-of-the-art manufacturing facilities and quality control, Graph-Hex enables customers to receive the most economical high quality carbon rizer in the market.

Di bawah **LARPEN METALLURGICAL SERVICE**, Graph-Hex dikembangkan di awal tahun 2000an sebagai sumber ekonomi carbon rizer berkualitas tinggi di industri pengecoran logam. Dengan mengoptimalkan sumber bahan baku berkualitas tinggi yang tersebar di seluruh dunia yang dikombinasikan dengan fasilitas manufaktur dan kontrol mutu terkini, Graph-Hex memungkinkan klien untuk mendapatkan carbon rizer berkualitas tinggi yang paling ekonomis di pasaran.



THE **SIMPSON GROUP** is a family of world-renowned foundry and process technology. From plant preparation, mixing machines, to a wide portfolio of foundry technologies including molding sand coolers, batch, and continuous mixers, on-line process controls, sand reclamation, sand laboratory instrumentation, core machines, core sand preparation plants, pneumatic transporters and system automation, the family of brands that make up the Simpson group succeed individually and as a whole through dedication to technical innovation and superior customer service.

SIMPSON GROUP merupakan grup keluarga terkemuka di dunia pengecoran logam dan teknologi proses. Mulai dari proses industri pabrik mixing hingga perannya yang besar dalam teknologi pengecoran logam, termasuk molding sand coolers, batch, sand continuous mixers, on-line process controls, sand reclamation, sand laboratory instrumentation, core machines, core sand preparation plants, pneumatic transporters dan system automation, keluarga Simpson Group telah berhasil memberikan inovasi teknis dan layanan yang unggul, baik secara individual maupun keseluruhan.



SINTOKOGIO has been committed to developing the highest innovative technology in order to supply the best foundry equipment in the process material industry since 1934. Sintokogio Group has applied its experiences and know-how of foundry technology to various related field and contributed to the production in many different kinds of industries. In order to provide better solution, Sintokogio extending network by establishing its own PT. SINTO INDONESIA, together with Alcorindo Sejahtera and Octo Corinda Sarana in 2012.

SINTOKOGIO berkomitmen untuk mengembangkan teknologi tinggi yang inovatif dalam menyediakan peralatan pengecoran logam terbaik di industri sejak 1934. Sintokogio Group telah menerapkan pengalaman dan pengetahuan teknologi pengecoran logam untuk berbagai bidang terkait, serta berkontribusi dalam produksi di berbagai jenis industri. Untuk terus memberikan solusi yang lebih baik, Sintokogio memperluas jaringan dengan membentuk perusahaan joint venture PT. SINTO INDONESIA, bersama Alcorindo Sejahtera dan Octo Corinda Sarana di tahun 2012.



ASK **CHEMICALS** is one of the world's largest suppliers of foundry chemicals and consumables. The comprehensive product and service portfolio extends from binders, coatings, feeders, filters and release agents to metallurgical products. Core manufacturing and development of prototypes as well as a broad range of simulation services complete the portfolio. ASK Chemicals sees itself as the driving force behind industry-specific innovations and is committed to offering customers a consistently high level of quality. Flexibility, quickness, quality and sustainability as well as cost-effective products and services are of key importance.

ASK **CHEMICALS** adalah salah satu pemasok bahan kimia dan bahan tambahan untuk industri pengecoran besi atau baja. Layanan produk dan jasa komprehensif mencakup binders, coatings, feeders, filters dan release agents sampai dengan produk-produk metalurgi. Manufaktur inti dan pengembangan prototipe serta cakupan luas dari beragam jasa simulasi melengkapi portofolio kami. ASK Chemicals memposisikan diri sebagai roda penggerak di belakang inovasi spesifik untuk industri dan berkomitmen untuk memberikan pelanggan kualitas terbaik secara konsisten. Fleksibilitas, kecepatan, kualitas dan keberlanjutan serta produk dan layanan efektif biaya adalah kunci utama.

OUR PRINCIPALS



On May 9, 2014, Minerals Technologies Inc. completed the transaction to acquire all outstanding shares AMCOL International Corporation.

MTI Performance Material is comprised of four key market segments: Metalcasting, Household Personal Care products, Basic Minerals and Advance Performance Additive. Volclay, along with American Colloid Company, comprise the performance material Group of MTI Performance Material and now has become the world's leading suppliers of bentonite products.

Volclay, our metal casting products group produces blended mineral binders containing sodium and calcium bentonites and organic additives sold under the trade name Additrol, Maxicarb and etc. Casting produced from these materials serves automotive,

railroad and machine tool markets, among others.

The Volclay brand of bentonite products are recognized worldwide as the standard in many industries, the largest being the metalcasting industry. Volclay bentonite products are used for iron and steel casting production in green sand process.

PRODUCT TYPES

Sodium (western) Bentonite

Green sand mold binder that offers high dry compression strength, high dry compression strength, high green deformation, high thermal durability and moderate green compression strength. This product is used by itself in the production of steel and iron castings. It may also be used in combination with calcium (southern) bentonite in ferrous and non-ferrous applications. Sodium bentonite works best in applications where the metal temperature is high, the sand to metal ratio is low or where there is flaskless molding.

Calcium (southern) Bentonite

Green sand mold binder that offers high green

compression strength, high flowability and quick tempering when subjected to mulling energy.

This product is used by itself or in combination with sodium bentonite in ferrous and non-ferrous applications. Calcium bentonite is used where lower temperature metals are poured, high sand flow ability is needed, muller energy is low, sand to metal ratios are high and where shakeout energy is low.

PRODUCT NAMES

- **Volcay-SPV*** a high-quality natural sodium bentonite recognized around the world as the metalcasting standard, is used exclusively for iron and steel casting production in green sand molding. For non ferrous production where extra duty is required.
- **Additrol*** and Maxicarb is a custom additive blend of western and/or southern bentonites and carbeneccious additives to meet the needs of both ferrous and nonferrous casting producers.
- **Hevi-Sand / Chromite Sand:** High density & low thermal expansion make this an excellent

medium for core production in high stress, heavy section applications for steel or iron casting production. Because of its high density, cores made from chromite sand are often used as chilling effect. It may also be used as a green sand medium.

- **CAST BOND*** A low viscosity bentonite blend exhibits a modified range of mechanical properties Cast Bond is an accurate blend of 2 bentonites designed to meet the specific needs of certain foundries. Cast Bond imparts a more suitable range of Green Compressive, Dry Compressive, and wet Tensile Strengths for certain foundries.
- **API-4 (oil & gas)** medium to high viscosity activated bentonite exhibiting variable dry particle size. API-4 material meets and exceeds all of the parameters set out by the American Petroleum Institute classification for a section 4 drilling bentonite. This American Petroleum Institute complied bentonite is applicable for several civil engineering and constructions.



SERVICES

Technical & Sales Support

A key component of American Colloids strength is our advanced laboratory facilities and our team of highly qualified and experienced staff. Our Research and Development laboratory provides extensive product testing and research analysis for new and improved products. Through this support we are better able to partner with our customers and assist them in meeting their competitive challenges.

Lab Capabilities

Our lab has the capability to perform compatibility, moisture, density, permeability, mold hardness (B and C scales), AFS clay, acid demand, pH, metallic content, bulk density, sieve distribution, thermal durability, methylene blue, volatile content matter, stepped volatile content matter, loss on ignition, ammoniacal nitrogen, total hardness, soluble calcium, green shear, wet tensile, green compression, dry compression, and hot compression strength at 1650°F, 1850°F and 2000°F testing.

The Company also offers other specialized testing capabilities that can be performed on request.

AMCOL USA

PRODUCT	MOISTURE	PASSING 200 MESH	SOLUBLE CALCIUM	VISCOSITY
	(%)	(%)		
Volclay SPV	0-12%	70-84%	0-0.84%	8-30cps

AMCOL THAILAND

PRODUCT	MOISTURE	PASSING 200 MESH	FREE SWELL	METHYLENE BLUE	PH
	(%)	(%)	(ML/2g)		
CASTBOND 73	10±2 %	80% (Min)	20 (Min)	50 ML (Min)	9.0 - 11.0

PRODUCT	MOISTURE	RETAIN ON 20 MESH	VCM	ASH	LC
MAXICARB	7% (Max)	0.2% (Max)	34.5% (Min)	14.5% (Max)	5.5% (Min)

HEVI-SAND		
TYPICAL		
Chromium Oxide	Cr ₂ O ₃	47.1%
Silica (Free)	SiO ₂	0.6%
Iron Oxide	FeO	26.5%
Aluminum Oxide	Al ₂ O ₃	13.5%
Magnesium Oxide	MgO	9.8%
Calcium Oxide	CaO	0.1%
Loss on Ignition		-0.5%
Moisture		0.06%
Acid Demand	pH 3 (ml)	5
	pH 4 (ml)	3.5
	pH 5 (ml)	2.5

AFS No = 45.7

We are able to provide a range of distributions from 25-70 according to individual requirements



We are a world leader in providing refractory solutions and services. Our value proposition to you is built on combining our world-class refractory product portfolio with our ability to deliver high-quality project management services - from planning and installation, to turnkey delivery and commissioning. Across all the industries we serve - Iron, Steel, Foundry, Aluminum, Cement, Power, and Petrochem - we deliver to you our promise of superior product performance and value-adding service, thanks to our global network of specialized industry experts and project management professionals.

Partnering you in the foundry industry and more

We are the world's leading provider of refractory solutions in Foundry, for both ferrous and non-ferrous markets, and have built successful working partnerships worldwide with hundreds of Foundry customers. Our market leadership in Foundry stems from three core points:

Our R&D Focus

We constantly bring new products to you with the aim of delivering productivity gains and cost-efficiency in production of castings.

Our Worldwide Network of Foundry Experts

Our Foundry team is made of experts who are "insiders" of the Foundry industry and who understand your business. They bring to you global expertise and high levels of customer service.

Our Unique Model OF Quarry to Furnace

Ownership of mining asset enables us complete process control, ensuring for you high reliability and quality standards.

Our End-to-End Product and Service Offer

Dedicated to Foundry Encompasses:

PRODUCT PORTFOLIO

We provide a comprehensive range of refractory solutions for all segments of Foundry industry, including many innovative and ground-breaking products for Coreless induction furnace, Casthouse, Cupola and Channel holding & Pouring.

DESIGN

We provide customized solutions including thermal profiling, product selection, selection of anchoring and insulation materials, development of innovative installation techniques & complete lining design.

LOGISTICS

We ensure timely delivery to your site, and also ensure tracing and monitoring after delivery.

INSTALLATION

We carry out high-quality installation services using in-house equipment and through use of optimal installation techniques. This ensures:

- Low wastage
- Reduction in energy requirements
- Reduction in time required
- Optimal performance of our refractory products

MAINTENANCE

We offer permanent on-site refractory services including regular and predictive maintenance and repairs. We provide rapid round-the-clock response to emergencies and provide instant support on call as required.

PROJECT MANAGEMENT

We provide complete project management services

including consultation, planning, delivery scheduling, supervision, site management and also direct training for customer personnel. Our end-to-end project management services ensure on- time and on-budget completion – be it part-service projects or turnkey delivery and commissioning.

MAINTENANCE SERVICE HALL

A new service concept from Calderys wherein we carry out off-site refurbishment of your furnace in our custom-built service halls. This allows timely, safe & hassle-free refractory relining and maintenance of your furnaces.

BENEFITS:

- Reduce downtime allowing minimal disturbance of production due to furnace demolition and relining
- Ensure safe operating conditions as the furnace work is carried out away from production zones or casting areas
- Reduce start-up time of your furnaces as they can be ready pre-dried at our site
- Reduce administrative work, free-up storage area and eliminate unnecessary hassle in your work environment

CORELESS INDUCTION FURNACES - IRON

Coreless Induction Furnaces have been a major primary melting unit in the ferrous foundry industry for many years.

The demands placed on the refractory lining are varied and sometimes very complex, bringing very different sets of circumstances that can affect the performance of the refractory lining, including:

THERMAL SHOCK

The constant thermal cycling of the refractory lining

LINING WEAR

- Erosion due to the physical movement of the liquid metal.
- Corrosion due to the aggressive chemistry of the metal and/or slag.

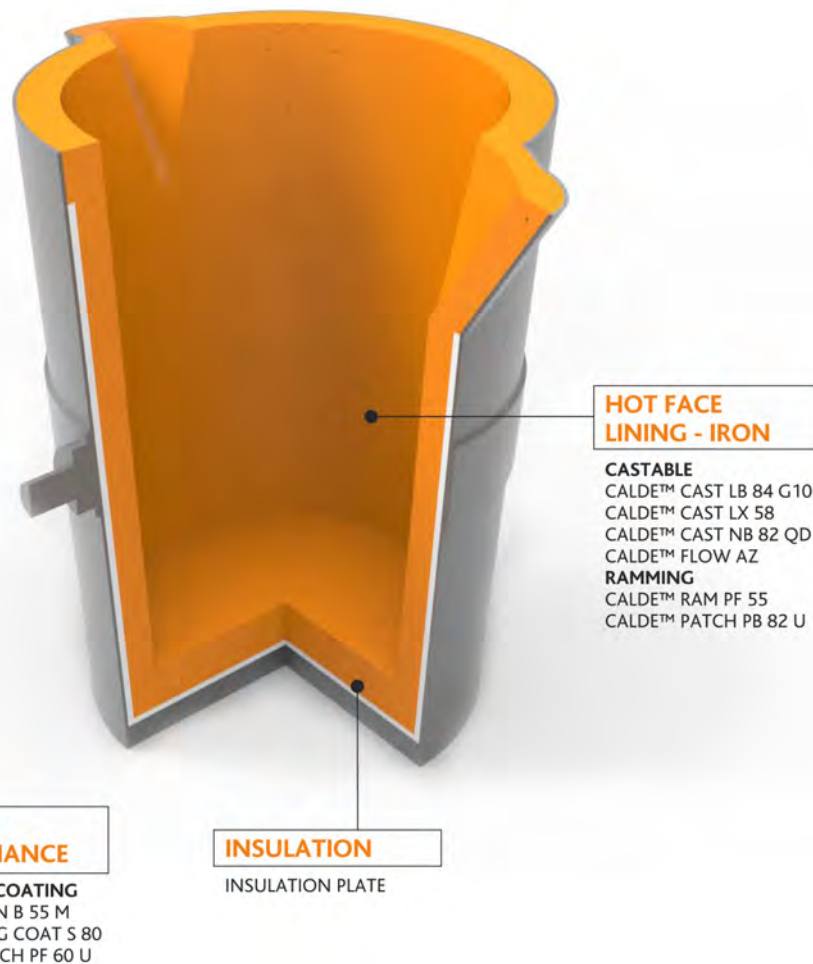
GAS PENETRATION

- The unwanted movement of gasses through the refractory lining such as carbon monoxide, zinc vapour, and zinc steam can be greatly reduced by our CALDE™ SHIELD concept

SLAGBUILD-UP

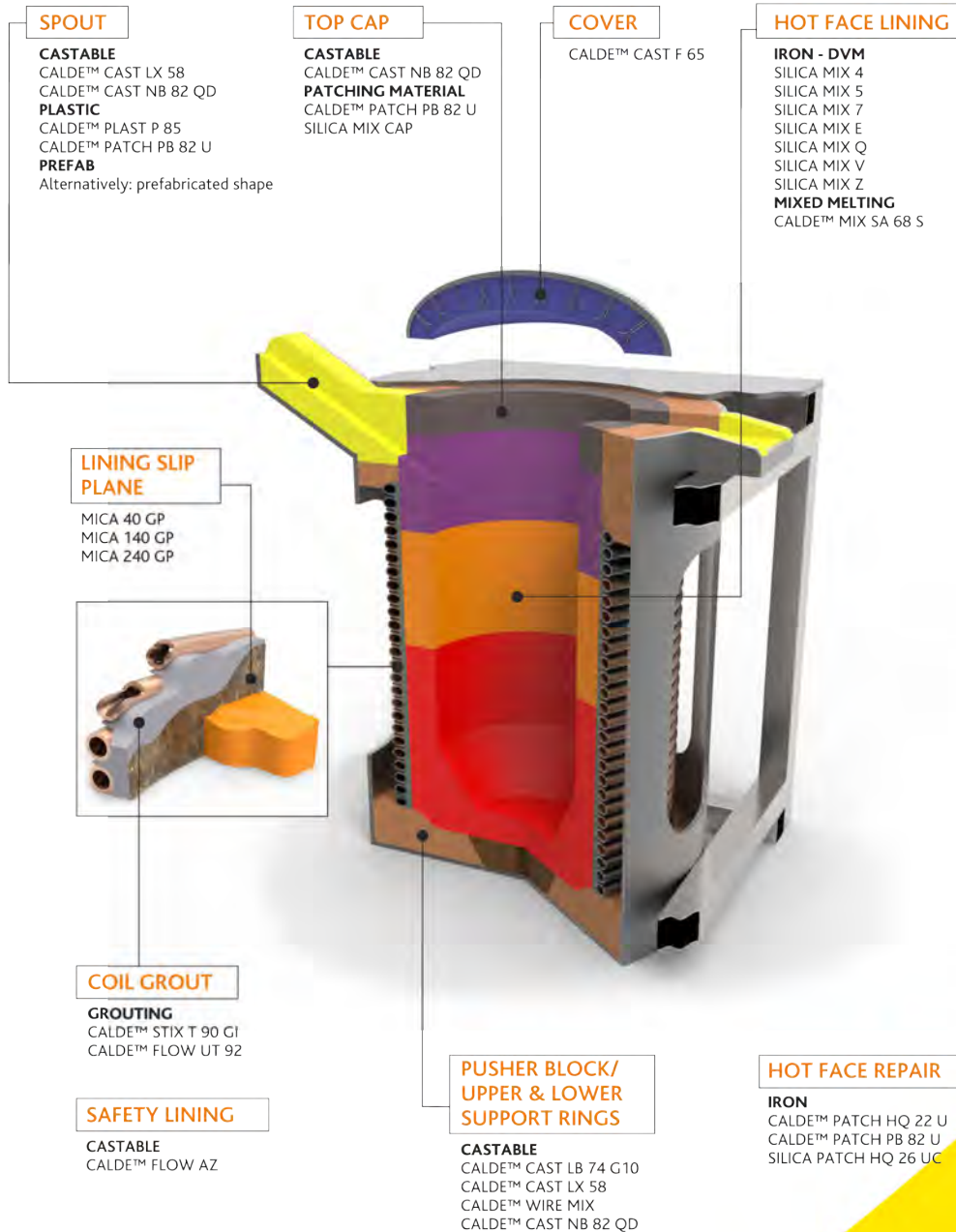
- The deposition of oxides on the refractory lining

IRON TRANSPORT, POURING & TREATMENT LADLES



CORELESS INDUCTION FURNACES IRON

CALDERYS



CORELESS INDUCTION FURNACES STEEL



STEEL LADLE



REPAIR & COATINGS

CALDE™ MAG COAT S 80
 CALDE™ PATCH HC 80 M
 CALDE™ PATCH PB 82 U
 CALDE™ PATCH PT 88 U

HOT FACE LINING

CALDE™ CAST 80
 CALDE™ CAST LT 94 SP
 CALDE™ CAST NT 92 QD
 CALDE™ CAST UB
 CALDE™ FLOW MA 92
 CALDE™ CAST LT 91 M



LARPEN METALLURGICAL SERVICE

GRAPH-HEX™ covers a complete range of carbon rizer used throughout the Iron and Steel industry. With the capability to specifically design products to individual customer needs our product line consists of over fifty products. GRAPH-HEX™ sulfur contents range to as little as 0.02% and up to 0.2%

GRAPH-HEX™ products offer the following advantages:

- High Carbon Recovery
- Rapid Dissolution
- Consistency
- Low Ash
- Low Sulfur
- Low Nitrogen
- Low Hydrogen
- Reliability
- Economical Savings
- Reduced Carbon Consumption, Tap-to-Tap Time, and Scrap Rate

Low Sulfur Pet Coke

Larpen Metallurgical Service produces low to medium sulfur petroleum cokes ranging in sulfur from 0.5% – 4.0%. These products are used as a charge carbon for gray cast iron.

Silicon Carbide

Larpen Metallurgical Service is a distributor of Carbolon MA 90% silicon carbide from Washington Mills.

LARPEN METALLURGICAL SERVICE

PRODUCT	FIXED CARBON	ASH & VOLATIL	FIXED SULFUR	NITROGEN	MOISTURE	SIZING
GRAPH - HEX 96	95.0-100.0%	0.0-5.0%	0.10-0.20%	N/A	N/A	90% (1mmx5mm)
GRAPH - HEX 98	97.0-100.0%	0-3.0%	0.01-0.07%	N/A	N/A	90% (1mm-5mm)
GRAPH - HEX 99	98.0-100.0%	0.0-2.0%	0.00-0.05%	0.05% max	1.0% max	90% (1mm-5mm)



OUR PRINCIPALS

OUR PRINCIPALS



↑ Sieve Set



↑ Universal Sand Strength



↑ Permeability



Methylene Blue ↑



Rapid Sand Washer ↑



Wet Tensile ↑

THE SIMPSON+GEROSA product line was introduced in 1993 on the belief that there is a demand for improved sand testing equipment. Conventional mechanical testing equipment is based on designs from 50 to 70 years ago and lacks the accuracy, repeatability and ease of use needed in maintenance of quality and efficiency in a metalcasting plant large or small. Critical operational and quality control decisions in foundry operations are made every day based on the results of laboratory analysis of foundry processes and materials.

To achieve the highest casting quality levels and the lowest costs of operation modern foundries demand laboratory instrumentation that is accurate, easy to use, repeatable, easy to calibrate and dependable. Simpson+Gerosa is committed to the continuous development of sand testing instrumentation that has incorporated the latest advancements in electronics, sensors and process technology to achieve increased accuracy and repeatability, improved ease of use, low cost of operation and better test result. With better process data foundries will make better decisions and higher quality, more profitable castings.

The Engineering Services Group at Simpson has only one goal – to help you get the highest performance and efficiency from your investment in Simpson Group products, thereby achieving:

- High machine up-time and minimized maintenance cost
- High performance to maximize the value and profitability of your products
- High yield, automation, and energy efficiency that lowers your operating costs
- High return on investment from quality parts and modernization kits that extend the useful life of equipment

Since 1912 we have been providing our customers with a wide range of services and products. We take pride of ourselves on responding to your needs. We take pride of ourselves on responding to your needs.

OUR PRINCIPALS







Greeting from the president

In September 2012, three companies – Sintokogio Ltd., PT. Alcorindo Sejahtera, and PT. Octo Corindo Sarana – established a joint venture company, PT. Sinto Indonesia, to mutually develop and provide delicate service to the customers in Indonesia.

Sintokogio accumulated numerous technologies related to the filled of metal casting as a manufacturing and system engineering company foundry equipment and plants since its establishment in 1934.

Octo Corindo Sarana, who has developed material business by providing superior services for foundry customers in Indonesia, became Sintokogio's distributor in 1995.

Alcorindo Sejahtera has grown as manufacture by not just simply make and sell products, but also providing lots of cooperation that is gratifying in every possible ways.

We strongly believe that PT. Sinto Indonesia surely bring together the strength Sintokogio, Alcorindo Sejahtera, and Octo Corindo Sarana provide the best service and support for the further development of “Monozukuri – creative design and professional manufacturing” in Indonesia where the eyes of the world have been on to its remarkable economic growth.

We are looking forward to making good contribution to development of Monozukuri in Indonesia and establishing strong business relationship with the customers in Indonesia through the service and support we provide.

President Director

Meet the need of local procurement



JAKARTA



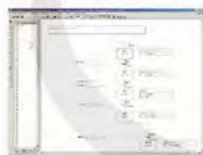
Maintenance Support System

Always in Top Condition

Strong Support for Customer's Manufacturing

Quick parts supply system

Quick Recovery Assistance to recover machine problem



Remote Support system

Avoid downtime of the Manufacturing



Sinto's support center

SINTO INDONESIA TECHNOLOGY

SINTO INDONESIA has gained knowledge and technological experience over our long history of casting making to contribute to development in the raw material industry.

- Foundry Aeration molding, V-Process, SEIATSU molding, Core making, Traceability, Sand reclamation, Sand transportation, Aluminum casting, Sand removal, Finishing
- Surface treatment
Shot peening, Precise finishing, Blast control, Finishing, Barrel finishing, Precision flat finishing, Precision brush polishing, etc.
- Environment
Air separation, Solid material separation, Waste water treatment, Filtering, Nitrogen removal, Recycling
- Special application Press, Clean handling, Ceramics, Vacuum forming, Thermal forming, Auto parts torture and performance tester, Fixture and die
- Material handling Conveyors, Scissors lift

MOLDING MACHINE



NAME		HORIZONTAL FLASKLESS MOLDING MACHINE	
MODEL		FDNX-0F	DNX-1
MOLD DIMENSIONS (mm)	L x W	450X350	500X400
	H	(COPE)150/(DRAG)150	(COPE)180/(DRAG)180
MOLDING METHOD		SIDE AERATION + SQUEEZE	
MAX MOLDING SPEED		36SEC/MOLD *1	40SEC/MOLD *1
OPERATION METHOD		AIR & AIR HYDRO	
MAX MOLD WEIGHT		71Kg	108Kg
*1 EXCLUDING CORE SETTING			

SHOT - BLASTING MACHINE



	CNDX-01
Loading capacity(kg/batch)	MAX 150kg
Loading capacity(m3/batch)	0.06m³(60L)
Weight per workpiece(kg/piece)	MAX 10kg
No.of impeller & motor	7.5kw x 1 unit
Shot release hole	Dia 7 mm
Air volume of dust collector	10m³ / min



	SNTX-II
MAX workpiece dimension (mm)	Dia 1200x600H
MAX loading capacity	MAX 700kg
No. of impeller & motor	5.5kw x 2 units
Air volume of dust collector	20m³ / min

SAND RECLAMATION

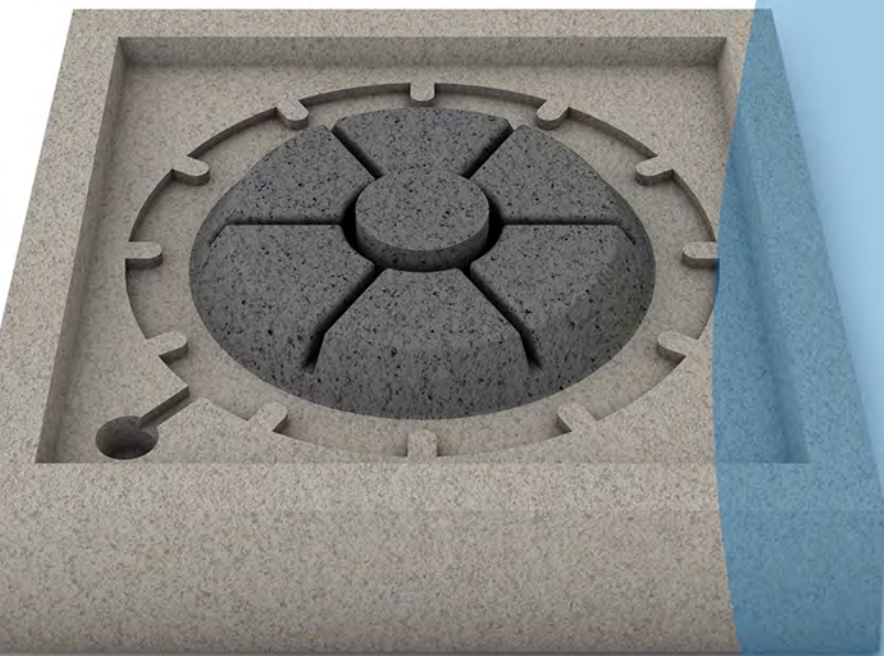
**SAND RECLAIMER USR****5 tons - 10 tons/hr**

The most suitable for mass
reclamation of alkali phenol sand

**SAND RECLAIMER WSR****5 tons - 10 tons/hr**

The most suitable for
reclamation of furan resin sand

OUR PRINCIPALS



ASKCHEMICALS
We advance your casting



Our wide product range comprises binders for all core manufacturing processes, coatings, additives, feeders, filters, release agents, metallurgical products including inoculants, Mg treatment wires, inoculation wires, and pre-alloys for iron casting. Core production and prototype development as well as a wide range of simulation services round off what the company has to offer.

Foundries have valued this broad product portfolio for many years. Yet the ASK Chemicals brand represents far more than its range of premium products. As a supplier of foundry chemicals it also supports foundries with services that cover the entire development and production process – developing, in close collaboration with the customer, solutions that offer real added value.



INNOVATION AND THE ENVIRONMENT

The success of ASK Chemicals is built on their ability to provide customers with the solutions to complex issues.

ASK Chemicals accomplishes this by bringing to market an unusually broad and innovative product portfolio, including resins, binders, coatings, additives, feeders, filters and release agents, in addition to providing a high level of response to customer needs and in-depth knowledge of the customers' production process.

EXACTCAST™ MINI-RISERS AND FEEDER CAPS

Highest quality and process reliability

Mini-risers and feeder caps from ASK Chemicals represent maximum quality and process reliability in the foundry industry. Our patented exothermic technology is uniquely effective – an industry-leader even – combined with productivity-boosting enhancements. Our products are available as both inorganic and Cold Box variants.

One crucial factor affecting the productivity of a foundry is the fettling needed on the finished cast part.



EXACTCAST™ mini-risers offer here clear advantages over natural sand and exothermic feeder caps.

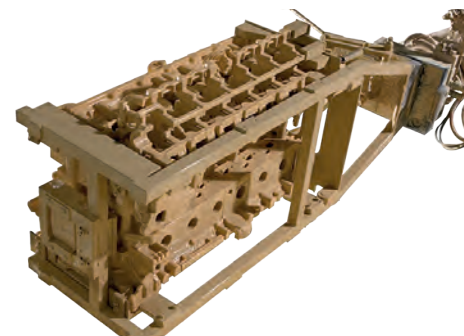


Coatings – MIRATEC™, SOLITEC™, VELVACOAT™ and CERAMCOTE™

COATINGS

No casting defects, but instead perfect surfaces and important additional benefits

Our coatings are much more than a simple barrier between sand and metal. They are high-tech systems that play a significant role in determining the surface quality of the casting and systematically eliminate typical surface defects.



ADDITIVES

More efficiency and better casting quality

Our additives are used to prevent casting defects or (partly) replace expensive special sands. In addition, technologically advanced additives facilitate uncoated casting. The latter offers potential for further productivity increases, especially in the area of Cold Box production.



BINDERS

For the most demanding foundry production processes

Our tried-and-true formulations have been adopted on a global scale and trusted for decades. We design our resin systems to withstand the most demanding foundry production processes. Furthermore, our dedication to research and development ensures cutting-edge resin technology for our customers' growing demands: reduced emissions, low VOCs, higher strength properties, improved shakeout, etc.

No-Bake binders		
Resole-Ester No-Bake	ALPHASET™	ALPHASET™ hardener
Polyurethane No-Bake	PEP SET™	PEP SET™ catalyst
Furan No-Bake	ASKURAN™ MAGNASET™ CHEM-REZ™	ASKURAN™ catalyst MAGNASET™ catalyst CHEM-REZ™ catalyst
Phenolic No-Bake	BERANOL™ CHEM-REZ™	BERANOL™ catalyst CHEM-REZ™ catalyst
Warm Box / Hot Box	KERNFIX CHEM-REZ™	HOTFIX CHEM-REZ™ catalyst
Alkyd No-Bake	LINO-CURE™	LINO-CURE™ coreactant

AUXILIARY PRODUCT OVERVIEW

		Product
Release agents	Cold Box processes	ECOPART™ FR, ECOPART™ 756, ECOPART™ 56 (D), ZIP SLIP™ 157 H
	No-Bake processes	ECOPART™ LP 89, ECOPART™ 80 S, ECOPART™ 84 S, ECOPART™ 102 G
	Hot-curing processes	ECOPART™ H1-350, ECOPART™ H2-350
	Green sand processes	BENTOGLISS*
Cleaners		ZIP-CLEAN™ 800, ZIP-CLEAN™ 2000
Adhesives		ASKOBOND™
Core putty fillers		ASKOPASTE
Cope seals		ASKOROPE
Vents		ISOVENTS™

* BENTOGLISS is a registered trademark of CLARIANT AG.

METALLURGICAL PRODUCTS

Greater process safety

ASK Chemicals supplies and manufactures high-quality metallurgical products for global foundry production. From furnace-based applications to late inoculation inputs, our holistic products for iron casting provide guaranteed and consistent results.

DESIGN SERVICES

for perfect casting results

Our Design Services team monitors the entire process from the development of the design concept and validation right up to the production of the cast part prototype. Our engineers have a wide range of experience and a clear understanding of all aspects of foundry technology and metallurgy. Our Design Services team has the right combination of

design, production and simulation expertise, co-operates with external companies and service providers, and enjoys extensive industry experience. ASK Chemicals' simulation service offers wide-ranging technical knowledge and understanding combined with state-of-the-art simulation programs (MAGMA, NovaCast, FLOW-3D and Arena-Flow®).

The following marks are registered by ASK Chemicals GmbH, ASK Chemicals Metallurgy GmbH and ASK Chemicals LLC: ALPHASET, ASKOBOND, ASKURAN, BERANOL, CERAMCOTE, CHEM-REZ, ECOPART, EXACTCAST, KERNFIX, LINO-CURE, MAGNASET, MIRATEC, PEP SET, SOLITEC, VELVACOAT, ZIP-CLEAN, ZIP SLIP.

WHO WE WORK WITH

PT. PAKARTI RIKEN
PT. TOYOTA MOTOR MANUFACTURING INDONESIA
PT. ASIAN ISUZU CASTING CENTRE
PT. ASAMA INDONESIA MANUFACTURING
PT. AT INDONESIA
PT. KARYA HIDUP SENTOSA
PT. BINA USAHA MANDIRI MISUZAWA
PT. KIRIU INDONESIA
PT. MOLTEN ALUMINIUM PRODUCER INDONESIA
PT. NIPPON PISTON RING
PT. GROWTH ASIA
PT. BAJA PERTIWI

**“WE KNOW, WE GET,
AND WE DELIVER ONLY
THE BEST PRODUCTS
WITH THE BEST QUALITY”**

Founder
PT. OCTO CORINDO SARANA



COMPANY CONTACT INFO



42

OCTO
Est. 1982
Company Profile



COMPANY CONTACT INFO

To learn more about what we can do for you, please visit our website
www.octo.co.id

For enquiries, email us to
octo_corindo@octo.co.id
octocorindo_surabaya@octo.co.id

Head Office & Logistic Center

Greenland International Industrial Center (GIIC)
Blok AA No. 19 Kota Deltamas
Bekasi 17530 Indonesia
Phone: +62 21 2851 7941-43
Fax: +62 21 2851 7940

Jakarta Office

Dharmawangsa Square
Jl. Dharmawangsa VI No. 38
Kebayoran Baru, Jakarta 12160, Indonesia
Phone: +62 21 727 80642-44
Fax: +62 21 727 80589

Surabaya Office Warehouse

Pergudangan Central Square
Jl. Raya A. Yani No. 41-43, Blok F-31
Gedangan - Sidoarjo - Jawa Timur, Indonesia
Phone: +62 31 854 5777
Fax: +62 31 855 6230

Supporting Warehouse

Jl. Raya Narogong km 25.9 No. 438
Ds. Dayeuh, Cileungsi, Bogor 16820, Indonesia



**“WHAT WE BUILD IS A
CONSISTENT ECOSYSTEM FOR
OUR EMPLOYEES, CLIENTS,
AND PARTNERS TO ACHIEVE
RESPECTIVE GOALS AND HAVE
THEIR EFFORT AWARDED.”**

✉ octo_corindo@octo.co.id
octocorindo_surabaya@octo.co.id
🌐 www.octo.co.id